



make
ARCHITEKCI

modu
HALE



www.makemodu.pl



+48 533 593 538

MODU HALE Sp. z o.o.
St. Pniewskiego 3A
80-246 Gdańsk
NIP 7010486539



*All visualizations are for illustration purposes only.

Modular house, that **does not require obtaining the building permit (according to polish law).**



insulated outer shell
from sandwich panels

Perfect solution for quick development of a recreational plot or commercial facilities.



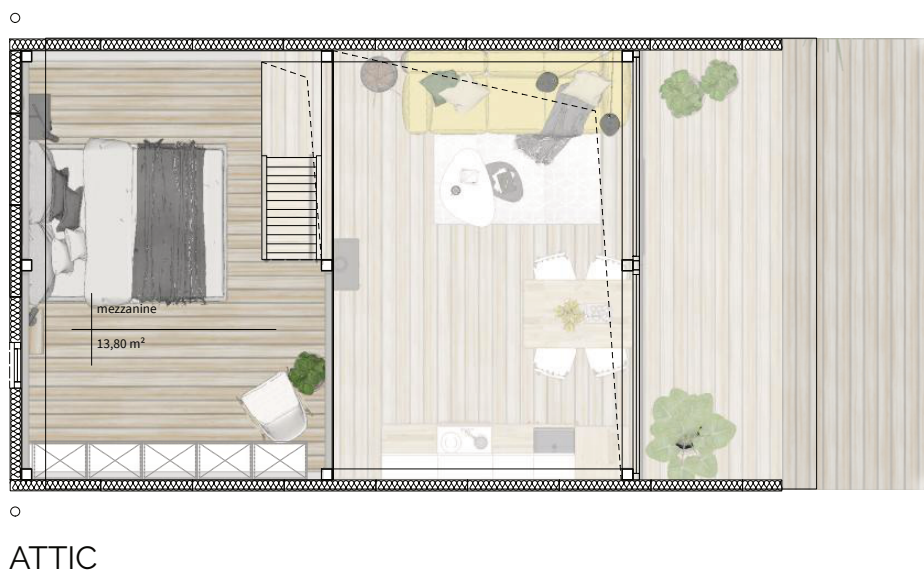
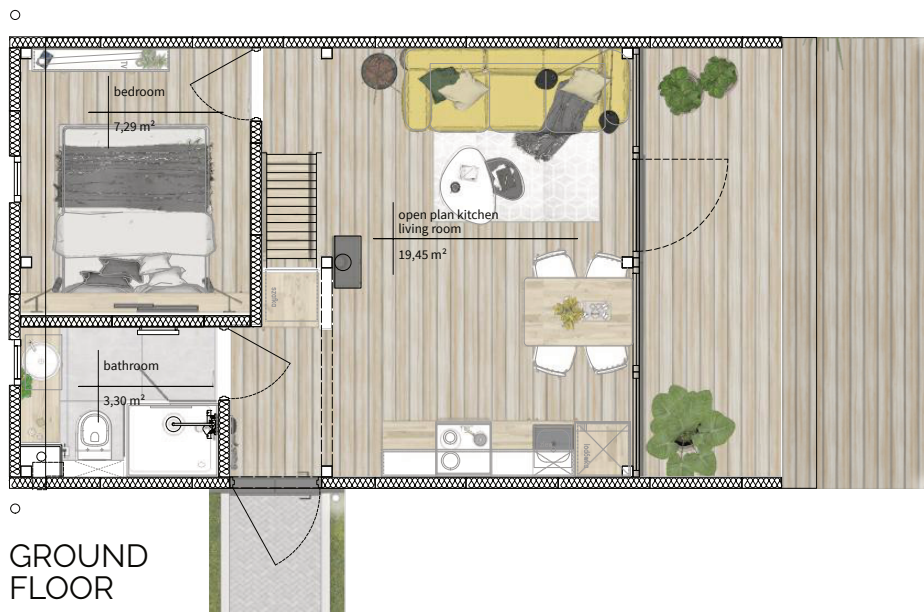
durable painted steel
construction

The interior of the building was designed in order to optimally utilize the surface area.



maximum gross floor
area: **35 m²**

Our customers will receive a complete documentation, that enables completing the formalities at the office appropriate for the building's location.



STANDARD VERSION

- closed shell (insulated walls, glazed gable wall - PVC, door, ventilation grille, mezzanine and ground floor prepared for installation of floor panels)
- gutter system
- openings for electrical and plumbing installations (preparation of the installations not included)

SHELL UNIT VERSION

- interior installations prepared for connection of the accessories: electrical installation (installation of switches and sockets); connecting the plumbing installations to the kitchen and bathroom
- additional 3 windows at the rear gable wall
- ladder stairs and mezzanine railing
- finishing floors with vinyl floor panels

ADDITIONAL OPTIONS*

- furnishings with household appliances
- lightning
- bathroom equipment
- 3 m long terrace

Price and standard individually customized for each client.



make
ARCHITEKCI

modu
HALE



www.makemodu.pl



+48 533 593 538

MODU HALE Sp. z o.o.
St. Pniewskiego 3A
80-246 Gdańsk
NIP 7010486539



mm 35 MODULAR HOUSE

*All visualizations are for illustration purposes only.

Modular house, that **does not require obtaining the building permit (according to polish law).**



insulated outer shell
from sandwich panels

Perfect solution for quick development of a recreational plot or commercial facilities.



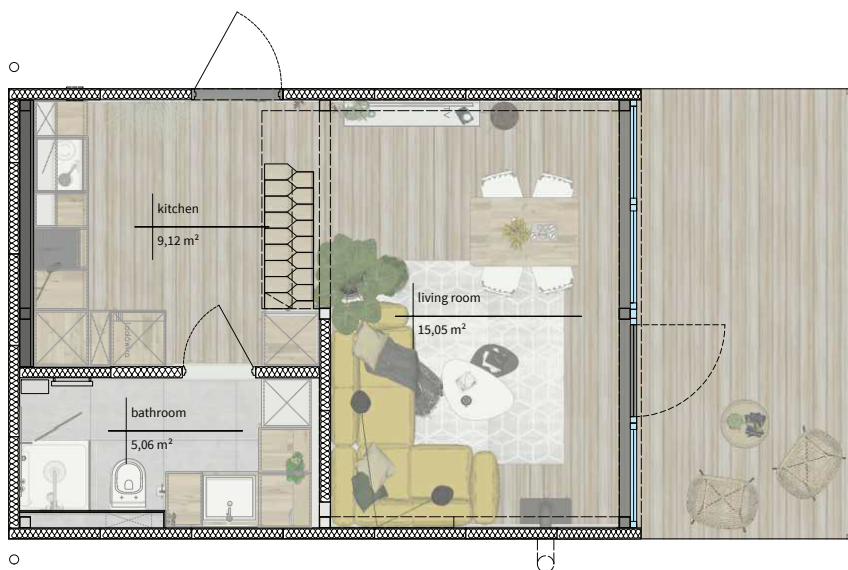
durable painted steel
construction

The interior of the building was designed in order to optimally utilize the surface area.



maximum gross floor
area: **35 m²**

Our customers will receive a complete documentation, that enables completing the formalities at the office appropriate for the building's location.



GROUND FLOOR



ATTIC

STANDARD VERSION

closed shell (insulated walls, glazed gable wall - PVC, door, ventilation grille, mezzanine and ground floor prepared for installation of floor panels)

gutter system

openings for electrical and plumbing installations (preparation of the installations not included)

SHELL UNIT VERSION

interior installations prepared for connection of the accessories: electrical installation (installation of switches and sockets); connecting the plumbing installations to the kitchen and bathroom

additional 3 windows at the rear gable wall

ladder stairs and mezzanine railing

finishing floors with vinyl floor panels

ADDITIONAL OPTIONS*

furnishings with household appliances

lightning

bathroom equipment

3 m long terrace

Price and standard individually customized for each client.