

## BASIC DATA

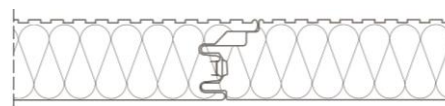
Building area	~ 35 m <sup>2</sup>
Floor area	~ 50 m <sup>2</sup>
Length	8,42 m
Width	4,92 m
Ridge height	6,00 m
Eave height	3,20 m
Roof slope	45 °

## CONSTRUCTION

- Main construction – steel frames mounted on the foundation footings; made of welded steel profiles S355 or metallurgical profiles; construction bolted on site
- Corrosion protection: paint 100µm

## OUTER SHELL

- Wall cover - sandwich panels with PIR core, 120 mm thick, panels installed vertically
- Roof cover – sandwich panels with PIR core, 120 mm thick



Wall sandwich panel

Roof cover from sandwich panels **require neither** additional insulation nor vapor barrier.

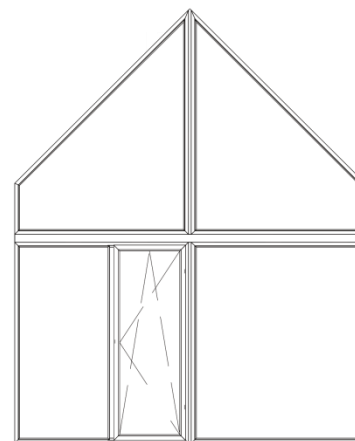
## PVC WINDOWS

Openable windows 500 mm x 1000 mm – 3 pcs.:

- ID7 302/320 6-chamber
- U factor 1,0
- Color 290 1-str. satin grey, white core
- Glass set 4XN/18SW/4/18SW/4XN 48mm

Glass facade:

- Color 290 1-str. satin grey, white core
- U factor 0,80
- Glass set 6XN/16SW/6/14SW/6XN 48mm
- Doors 1000 x 1100 mm



Glass facade

## EXTERIOR DOORS

- Steel
- colour RAL 7016 (anthracite)
- dimension with the frame: 990 x 2075 mm

## FLOOR

OSB board prepared for finishing floors with vinyl floor panels.



## INSTALLATIONS

**Plumbing installations** - plumbing distributed to appliances in the kitchen and bathroom with connection to the external installation in the foundation slab.

- kitchen – plumbing connections to install a sink
- bathroom - plumbing connections to install a shower, WC, sink and washing machine

**Electrical installations** wires distributed on walls, electric switchboard. All cables are terminated with sockets or surface-mounted switches and lighting outlets.

- single socket 1 pc.
- double socket 11 pcs.
- Waterproof sockets 2 pcs.
- Single switch 5 pcs.
- Ceiling lightning outlet 4 pcs.

## ADDITIONAL EQUIPMENT

### BATHROOM

- WC, shower, top loading washing machine with dimensions of 60 x 40 x 90 cm, wash basin, basin faucet, bespoke fitted furniture, lightning (light fixture 1 pc.) – according to the project

### KITCHEN

Bespoke furniture, according to the individual project:

- The width of the lower fitted kitchen: 2,7 m
- The width of the upper fitted kitchen: 2,7 m

### TERRACE

Prepared from hanit - a material made of recycled plastic. Terrace dimentions: 5 m x 3,5 m

